



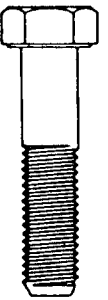
# VIKING BOLT, INC.

**"WHOLESALE FASTENER DISTRIBUTOR SINCE 1991"**

7319 SW KABLE LANE #900 • PORTLAND, OR 97224  
(503) 620-3400 • (800) 835-4437 • FAX (503) 620-7062

INTERNET: <http://www.vikingbolt.com> • E-MAIL: [vikingbolt@verizon.net](mailto:vikingbolt@verizon.net)

**RoHS COMPLIANT SOURCING • SPECIALS • STUDS • RIVETS – SOLID & BLIND • CABLE TIES  
EYE BOLTS • ALL THREAD ROD • CRC LUBRICANTS • PIPE FITTINGS • BOLT BINS – METAL & PLASTIC**



## ANCHORING SYSTEMS

- DROP IN
- EPOXY
- EXPANSION
- HOLLOW WALL
- LEAD SHIELDS
- MASONRY ANCHORS
- NAIL-IN
- SCREW ANCHORS (VINYL OR PLASTIC)
- TIE-WIRE
- TOGGLE BOLTS

## BOLTS

- ANCHOR
- CARRIAGE
- ELEVATOR
- FLAT HEAD
- FOUNDATION
- J-BOLTS
- LAG
- MACHINE
- PLOW
- SQUARE
- SQUARE HEAD
- STEP
- STRUCTURAL [A325/A490]
- TAP
- U-BOLTS

## CAP SCREWS

- GRADE 2
- GRADE 5
- GRADE 8
- GRADE 9
- 12-POINT
- METRIC

## CUTTING TOOLS

- CUT OFF WHEELS
- DIES
- DRILL BITS
- GRINDING WHEELS
- REAMERS
- TAPS

## MATERIALS

- ALLOY
- ALUMINUM
- BRASS
- BRONZE
- COPPER
- MONEL
- NYLON
- STAINLESS
- STEEL
- TITANIUM

## NUTS

- CAP & TEE
- CASTLE & SLOT
- COUPLING
- FINISHED
- HEAVY
- HEX & SQUARE MACHINE SCREW NUTS
- KEPS
- LEFT HAND
- LOCK – NYL INS.
- LOCK ALL METAL
- METRIC
- SAE HI NUTS
- SPECIALS
- SQUARE
- THIN [JAM]
- WELD
- WING

## PINS

- CLEVIS
- COTTER
- DOWEL
- GROOVE
- HITCH
- SPRING
- TAPER

## PLATING

- BLACK OXIDE
- BLACK ZINC
- BRASS
- BRONZE
- HD GALV
- MECH GALV
- MECH ZINC
- NICKEL
- PHOS & OIL
- RoHS
- SILVER
- TIN
- ZINC
- ZINC NICKEL

## SCREWS

- DECKING
- DRIVE
- DRYWALL
- MACHINE [SLOT/PHIL]
- METRIC
- PARTICLE BOARD
- SELF DRILLING
- SEMS
- TAMPER-RESISTANT
- TAPPING [SLOT/PHIL]
- THREAD CUTTING
- THREAD FORMING
- WOOD [SLOT/PHIL]

## SOCKET PRODUCTS

- BUTTON HEADS
- SET – SOCKET HD
- SET – SQUARE HD
- SOCKET CAPS
- SOCKET SHOULDER BOLTS
- TAMPER RESISTANT

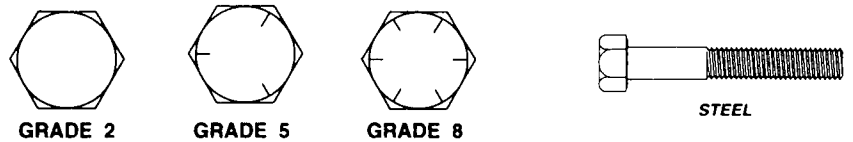
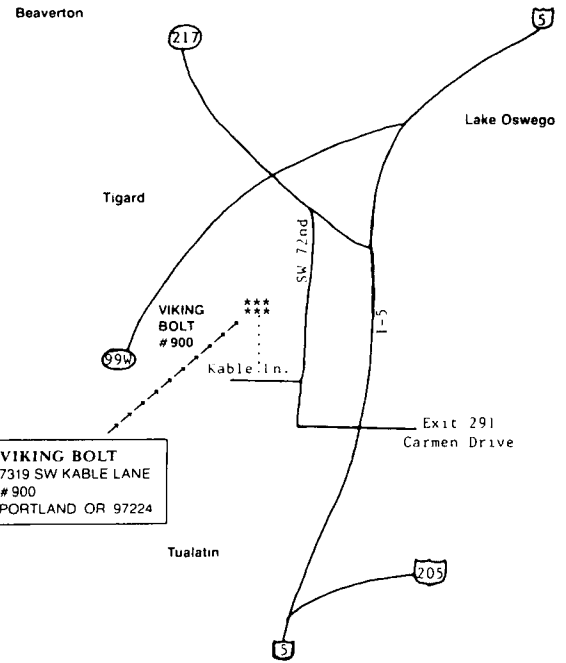
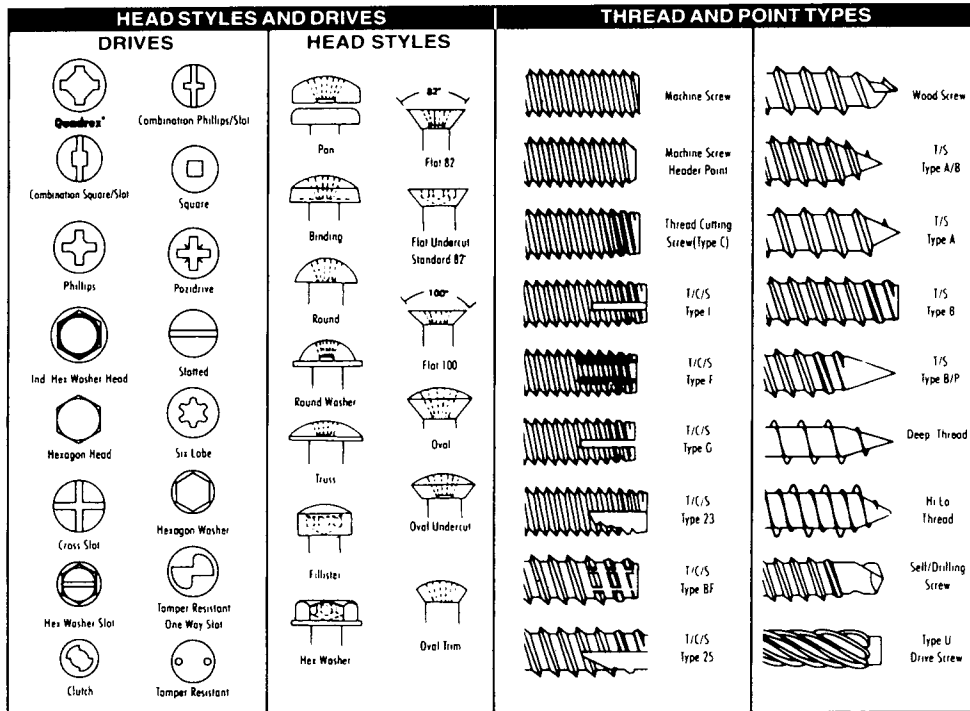
## WASHERS

- A-N [ARMY/NAVY]
- BELLEVILLE
- BEVEL
- BONDED/NEO
- CUP
- FENDER
- LOAD INDICATOR
- LOCK
  - CSK EXT
  - HEAVY
  - INTERNAL
  - EXTERNAL
- MALLEABLE
- METRIC
- M-S [MILITARY]
- SAE
- SPECIAL WASHERS & STAMPINGS
- STRUCTURAL [F436]
- USS
- HI-ALLOY
- HI COLLAR
- REG/LITE

- ONE CALL FOR ALL YOUR FASTENER NEEDS

**MANY OTHER ITEMS AVAILABLE**  
**VIKING BOLT . . . "WE KEEP IT TOGETHER"**  
 SPECIALIZING IN DISTRIBUTION OF A FULL RANGE OF AMERICAN AND METRIC, STANDARD AND NON-STANDARD . . .  
 LARGE METRIC STOCK – ALL MATERIALS AND SIZES . . .  
 FERROUS AND NON-FERROUS FASTENERS . . .  
 SOME ITEMS AVAILABLE IN DOMESTIC, NORTH AMERICAN OR IMPORT MATERIAL  
**LOCALLY OWNED . . . COMMITTED TO SERVICE**

- FAST, *VIKING BOLT* SERVICE AT WILL CALL
- PROFESSIONAL, EXPERIENCED SALES PEOPLE



DIAMETER & LENGTH RANGE OF STANDARD AND STOCKED SIZES.

# VIKING BOLT, INC.

7319 SW Kable Lane #900  
Portland, OR 97224  
(503) 620-3400  
(800) 835-4437  
FAX (503) 620-7062

VB	NATIONAL COARSE THREAD		
	GRADE 2	GRADE 5	GRADE 8
1/4-20	1/2" to 8"	1/2" to 8"	1/2" to 8"
5/16-18	3/8" to 8"	3/8" to 8"	1/2" to 8"
3/8-16	1/2" to 12"	1/2" to 10"	1/2" to 8"
7/16-14	3/4" to 6"	3/4" to 10"	3/4" to 8"
1/2-13	1/2" to 24"	1/2" to 15"	3/4" to 15"
9/16-12	-----	1" to 6"	1" to 6"
5/8-11	1" to 24"	1" to 15"	1" to 15"
3/4-10	1" to 24"	1" to 15"	1" to 15"
7/8-9	1 1/4" to 24"	1 1/2" to 12"	1 1/2" to 12"
1-8	1 1/2" to 24"	1 1/2" to 15"	2" to 12"
1 1/8-7	2" to 16"	2" to 12"	2 1/2" to 16"
1 1/4-7	2 1/2" to 24"	2" to 13"	2 1/2" to 16"
1 3/8-6	-----	-----	3" to 16"
1 1/2-6	3" to 16"	3" to 12"	4" to 16"
1 3/4-5	5" to 16"	5" to 8"	4" to 16"
2-4 1/2	8" to 16"	-----	4" to 16"

VB	NATIONAL FINE THREAD			
	GRADE 2	GRADE 5	GRADE 8	
1/4-28	NOT AVAILABLE	1/2" to 8"	1/2" to 6"	
5/16-24		1/2" to 6"	1/2" to 6"	
3/8-24		1/2" to 8"	1/2" to 6"	
7/16-20		3/4" to 6"	3/4" to 6"	
1/2-20		3/4" to 15"	3/4" to 15"	
9/16-18		1" to 6"	1 1/4" to 6"	
5/8-18		1" to 15"	1" to 15"	
3/4-16		1" to 15"	1" to 15"	
7/8-14		1 1/2" to 10"	2 1/2" to 10"	
1-14		2" to 10"	2" to 10"	
1 1/8-12	GRADE OR	3" to 10"	2 1/2" to 15"	
1 1/4-12		3" to 12"	2 1/2" to 16"	
1 3/8-12		5	-----	3 1/2" to 16"
1 1/2-12		OR	3" to 6"	3" to 16"
1 3/4-12	8	-----	4" to 16"	
2-12	8	-----	4" to 16"	

GRADE	SPECIFICATIONS	MINIMUM TENSILE STRENGTH	PROOF LOAD
2	SAE J429 ASTM A307 GRADE A & B	60,000 PSI	36,000 PSI
5	SAE J429 ASTM A449	1/4" TO 1" DIA: 120,000 PSI OVER 1" TO 1 1/2": 105,000 PSI	1/4" TO 1" DIA: 85,000 PSI OVER 1" TO 1 1/2": 74,000 PSI OVER 1 1/2" TO 3": 55,000 PSI
8	SAE J429 ASTM A354 GRADE BD	150,000 PSI	120,000 PSI